

# NYC Solid Waste Trends 1992-2021

Isabella Park  
Stony Brook University  
Waste Data & Analysis Center

# About Me

B.A. Environmental Studies and Sustainability Studies at Stony Brook University

Graduate (hopefully!) Spring 2025

Waste Data & Analysis Center Undergraduate Research Assistant

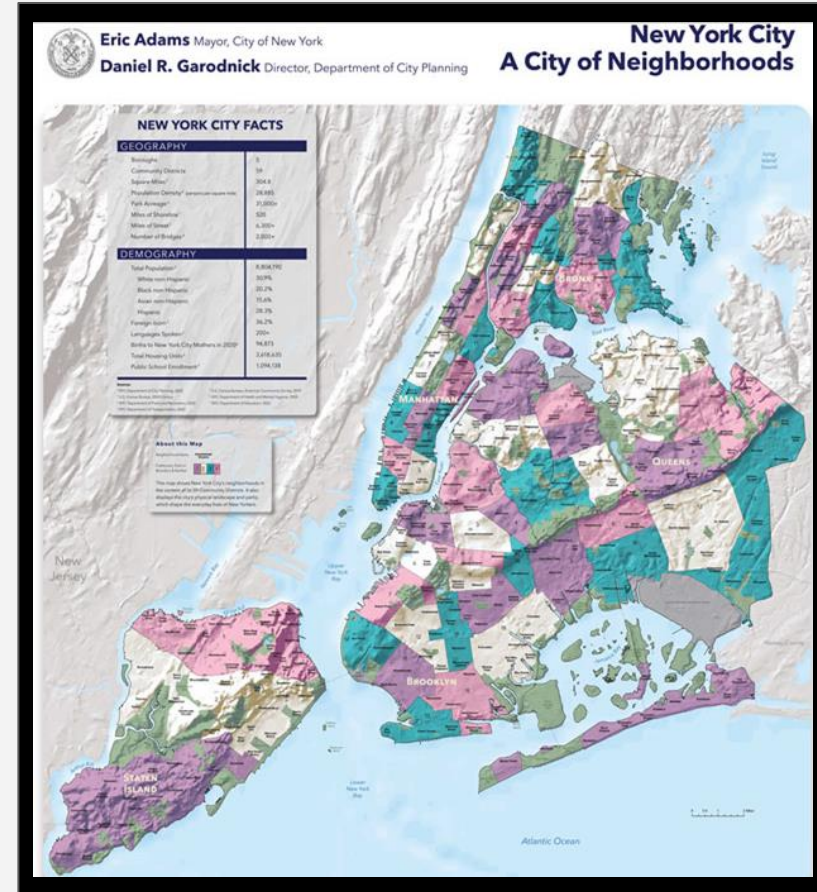
# New York City

5 boroughs

Biggest city in US

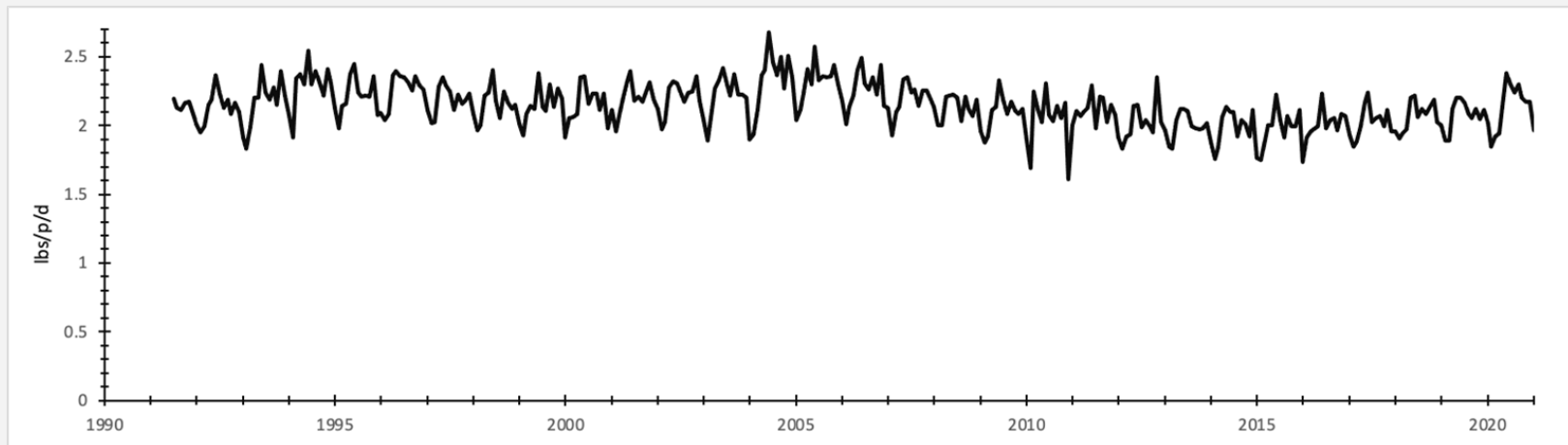
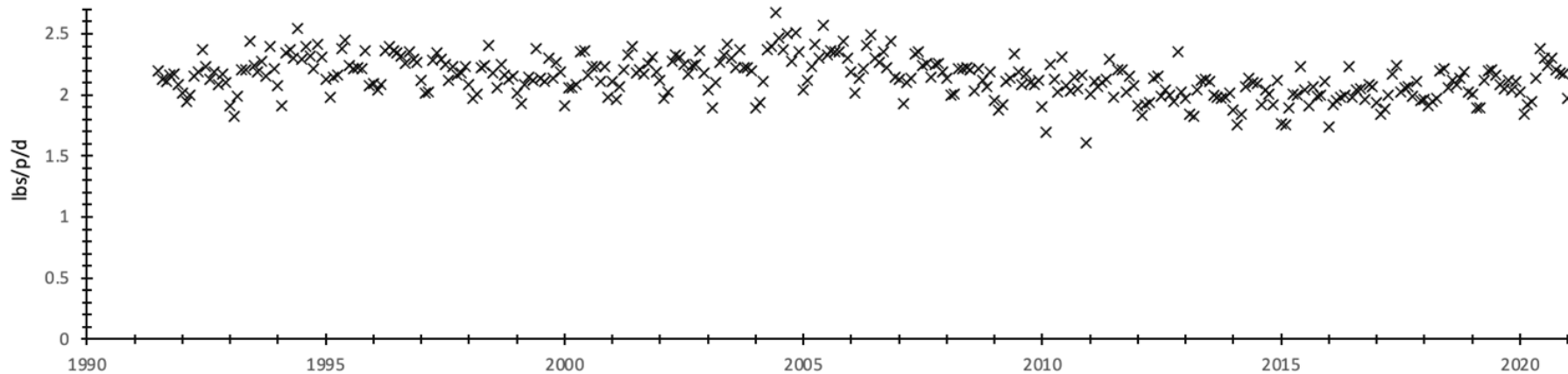
Spends billions in solid waste and snow removal

1990, disposed 27,000 tons per day at Fresh Kills Landfill in Staten Island

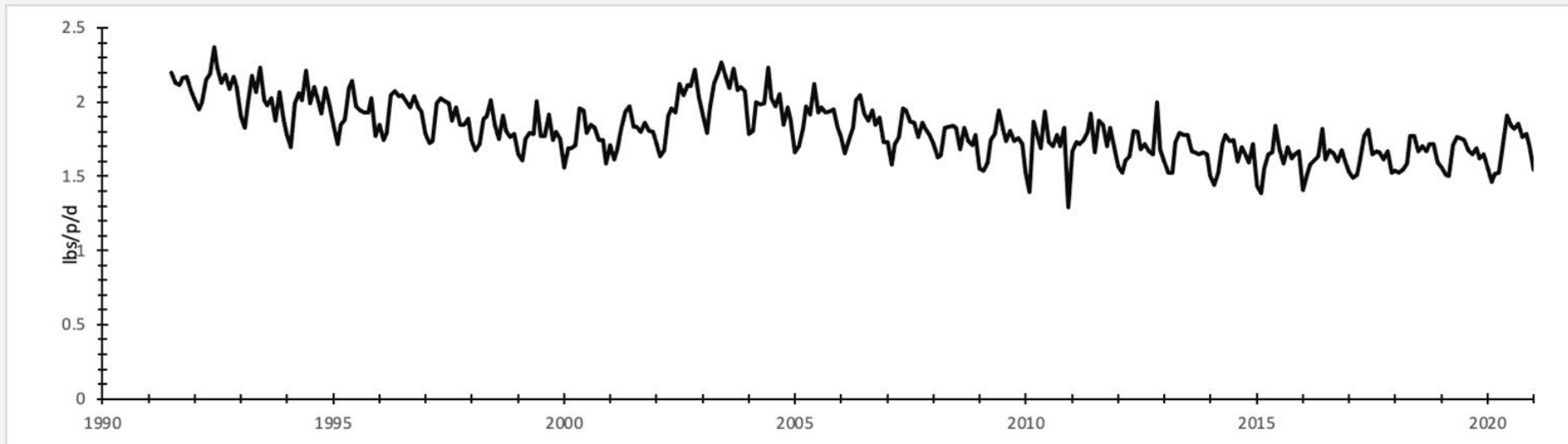


<https://www.nyc.gov/site/planning/data-maps/city-neighborhoods.page>

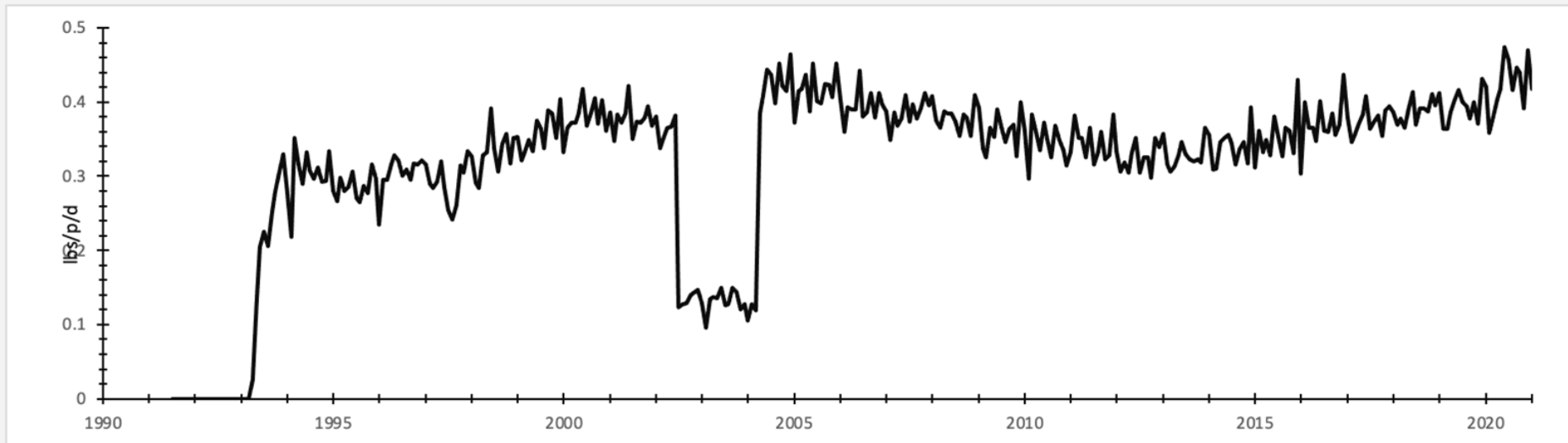
tot waste stream NYC



# Disposed Waste NYC



# Recycling



# Bronx Community Districts

Total Population 2020: 1,477,278

Median HH Income: \$43,726

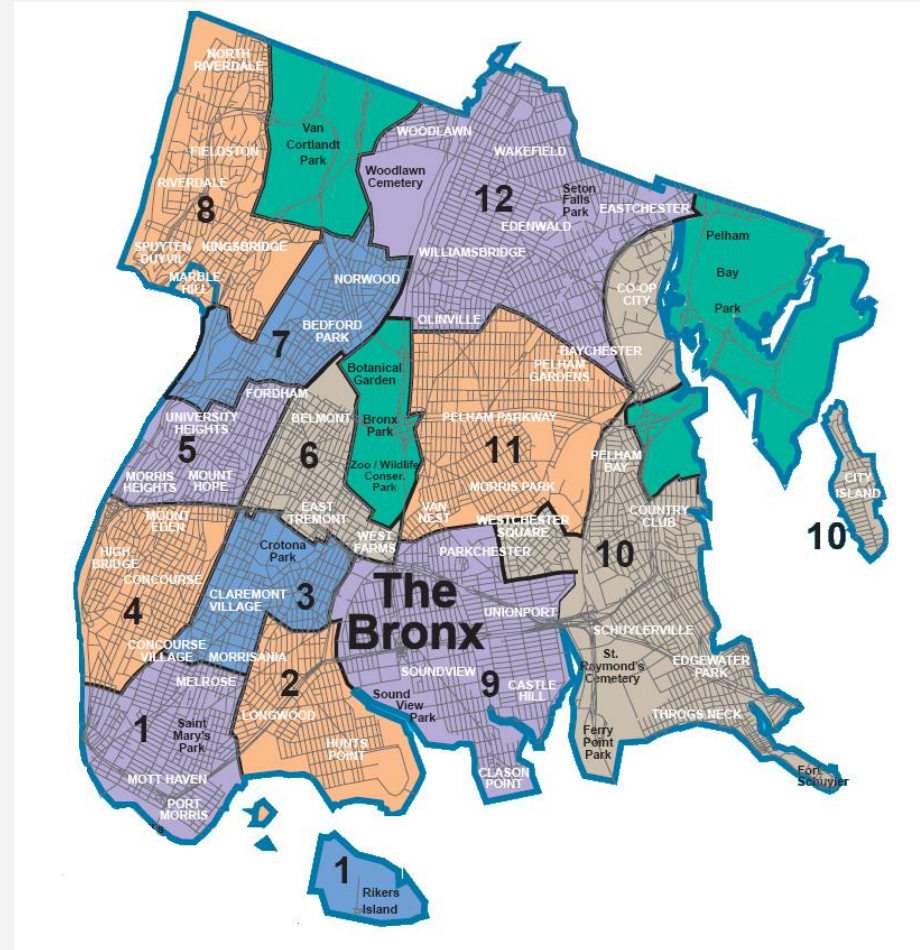
% HS Diploma: 74.1%

% Bachelor's or Higher: 20.9%

HH size: 2.72 people

44.3% African American/Black

56.6% Hispanic/Latino



# Bronx

## Collections Monday - Saturday

- 2-3x week refuse collection, dependent on size
- Recycling collected 1-2 x week
- No collection Sundays & City Holidays (13)

# Bronx CD 1 Demographics

Total Population 2020: 100,929

Median HH Income: \$26,166

% HS Diploma: 15.79%

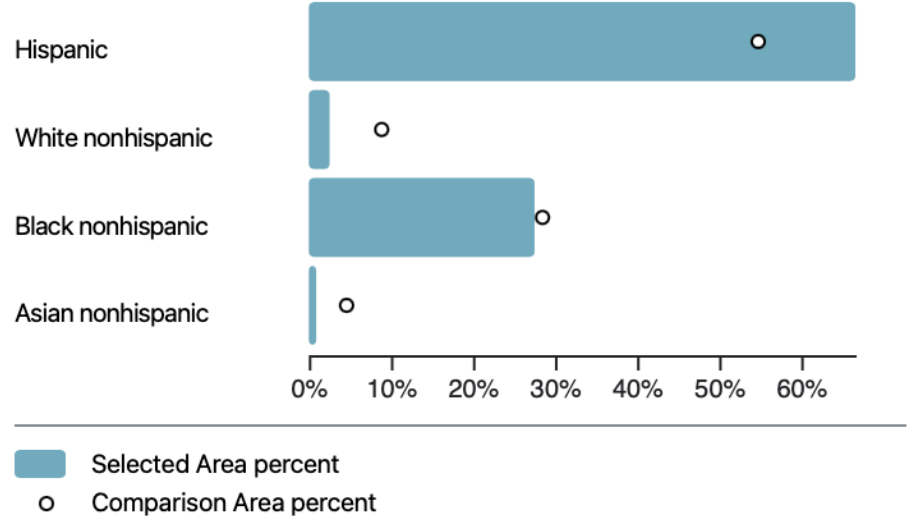
% Bachelor's or Higher: 7.01%

Avg. HH size: 2.74

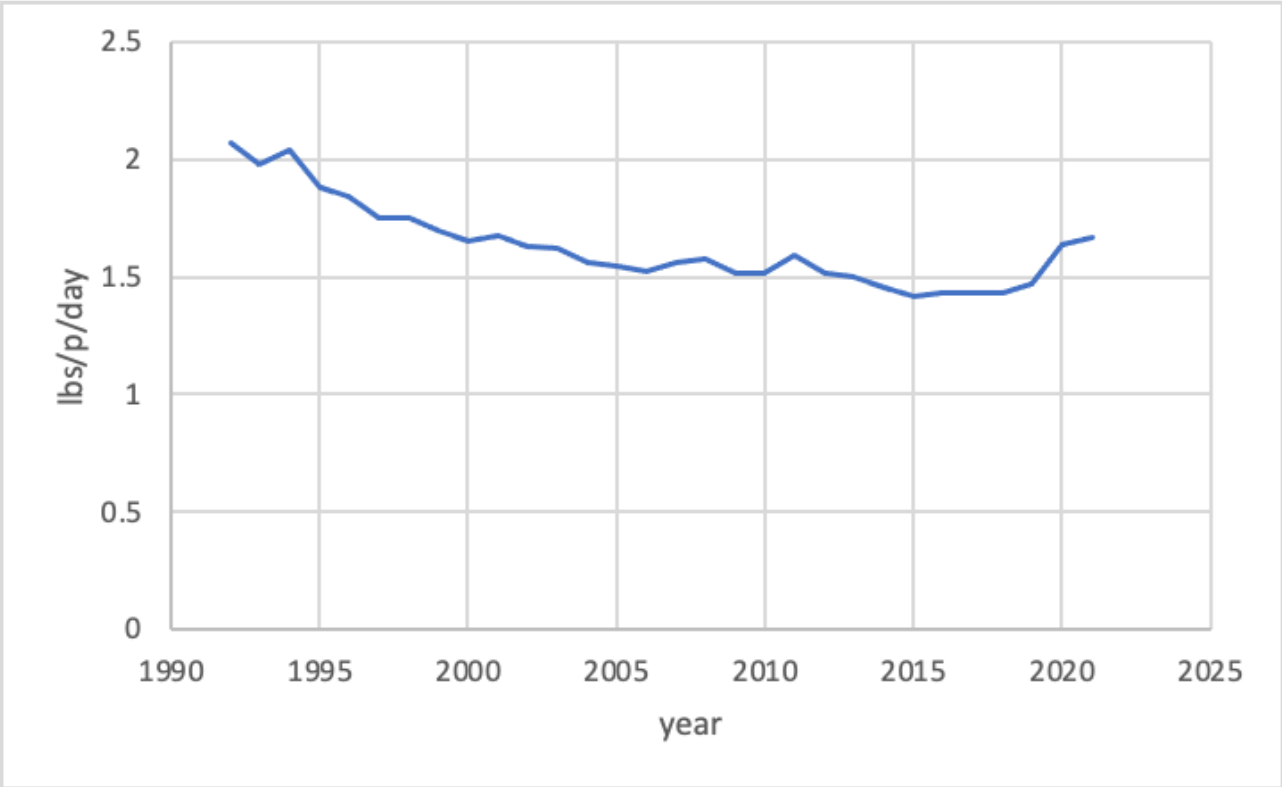
66.6% Hispanic/Latino

27.5% African American/Black

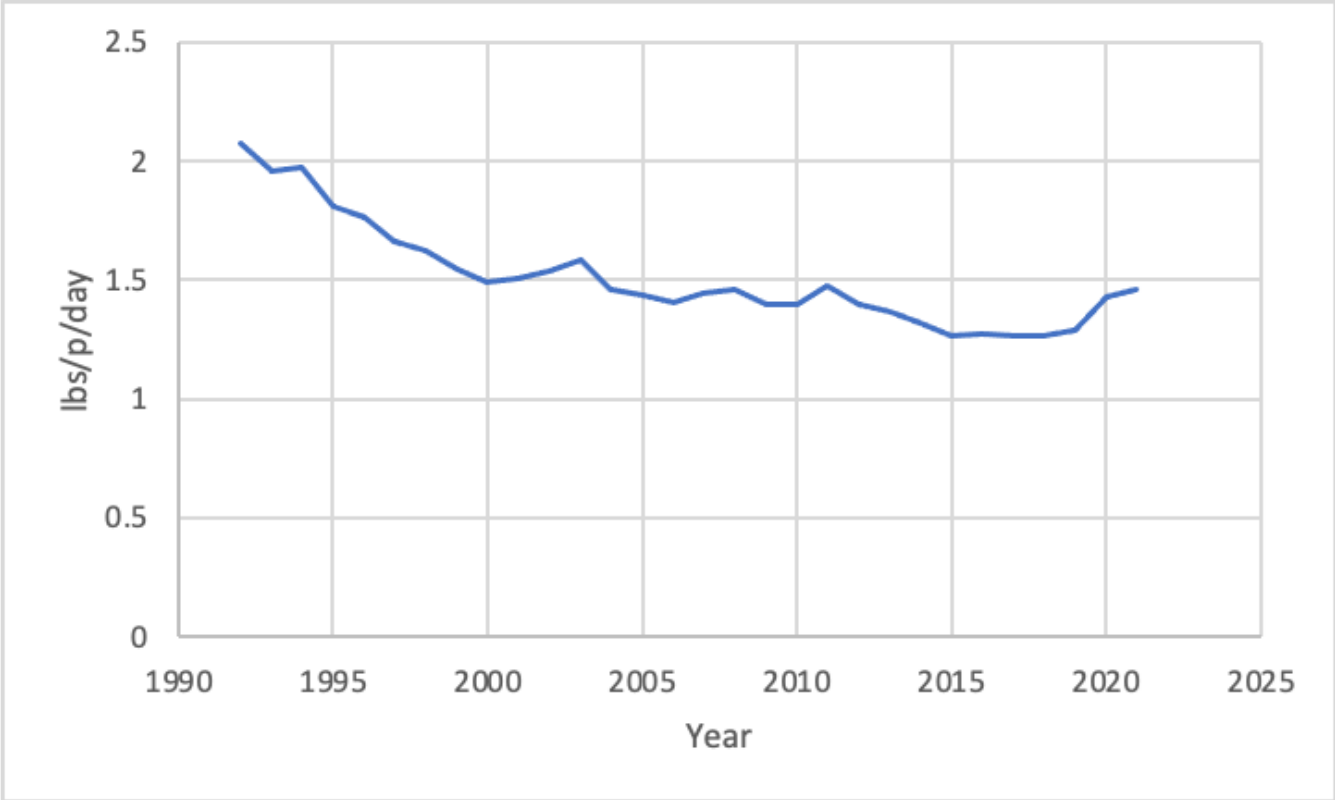
## Percent Distribution of Race/Hispanic Origin Groups



# Bronx CD 1 Total



# Bronx CD 1 Disposed



# Bronx CD 6 Demographics

Total Population 2020: 89,216

Median HH Income: \$26,473

% HS Diploma: 14.94%

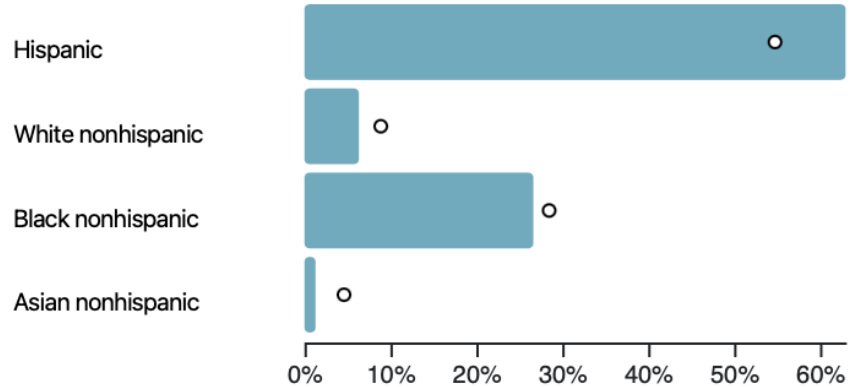
% Bachelor's or Higher: 7.07%

Avg. HH size: 2.66

63.0% Hispanic/Latino

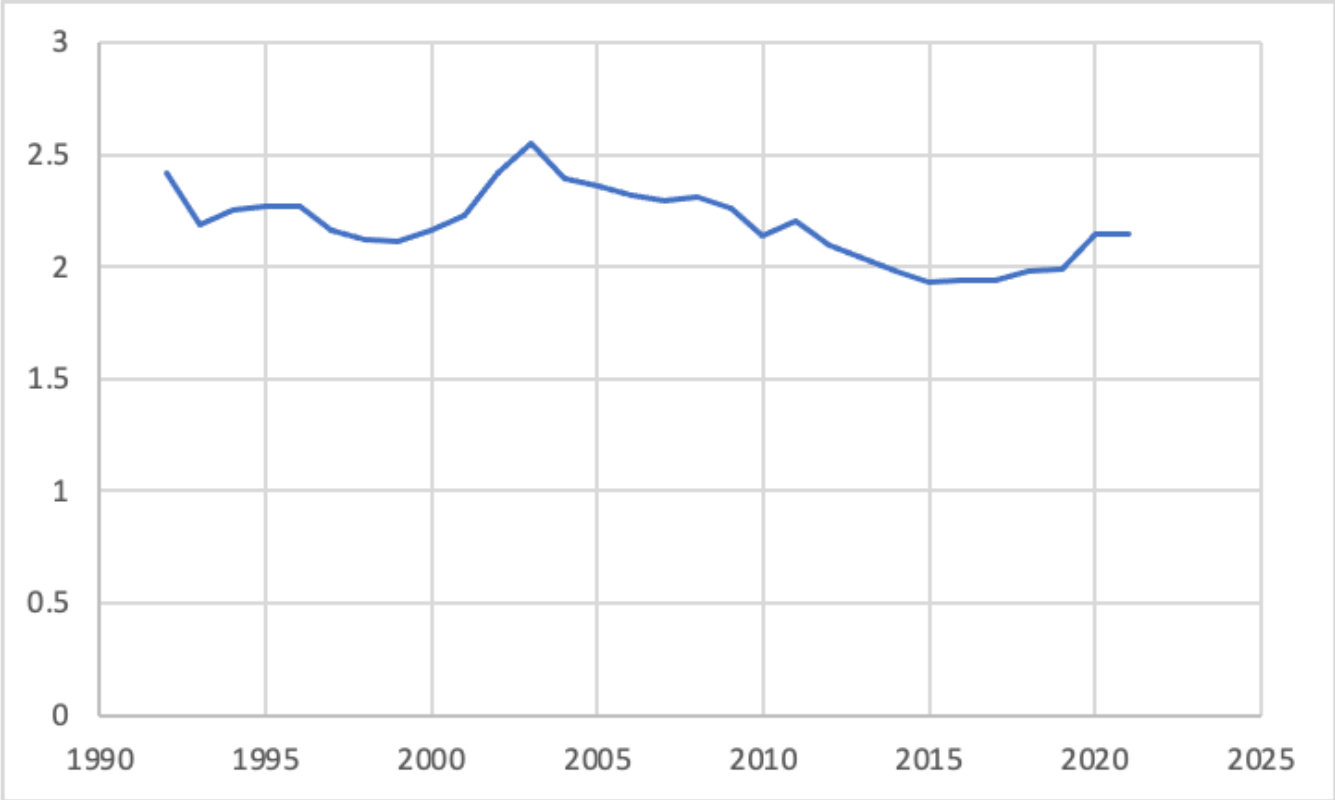
26.6% African American/Black

## Percent Distribution of Race/Hispanic Origin Groups

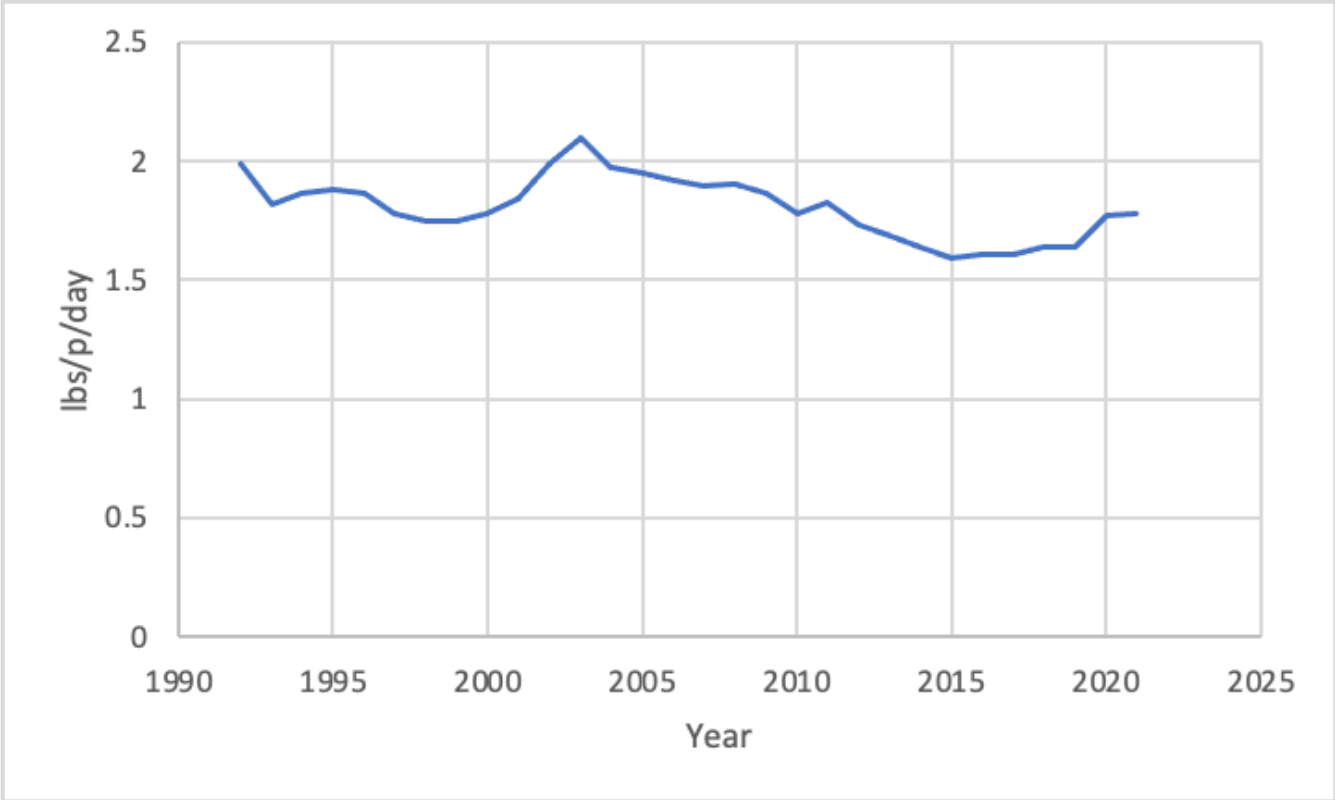


Selected Area percent  
Comparison Area percent

# Bronx 6 Total



# Bronx 6 Disposed



# Bronx CD 8 Demographics

Total Population 2020: 106,924

Median HH Income: \$64,111

% HS Diploma: 13.77%

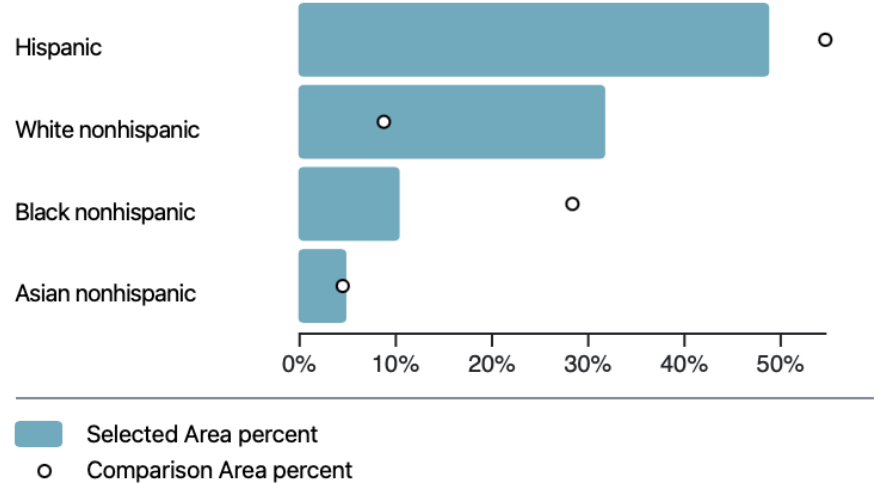
% Bachelor's or Higher: 28.59%

Avg. HH size: 2.37

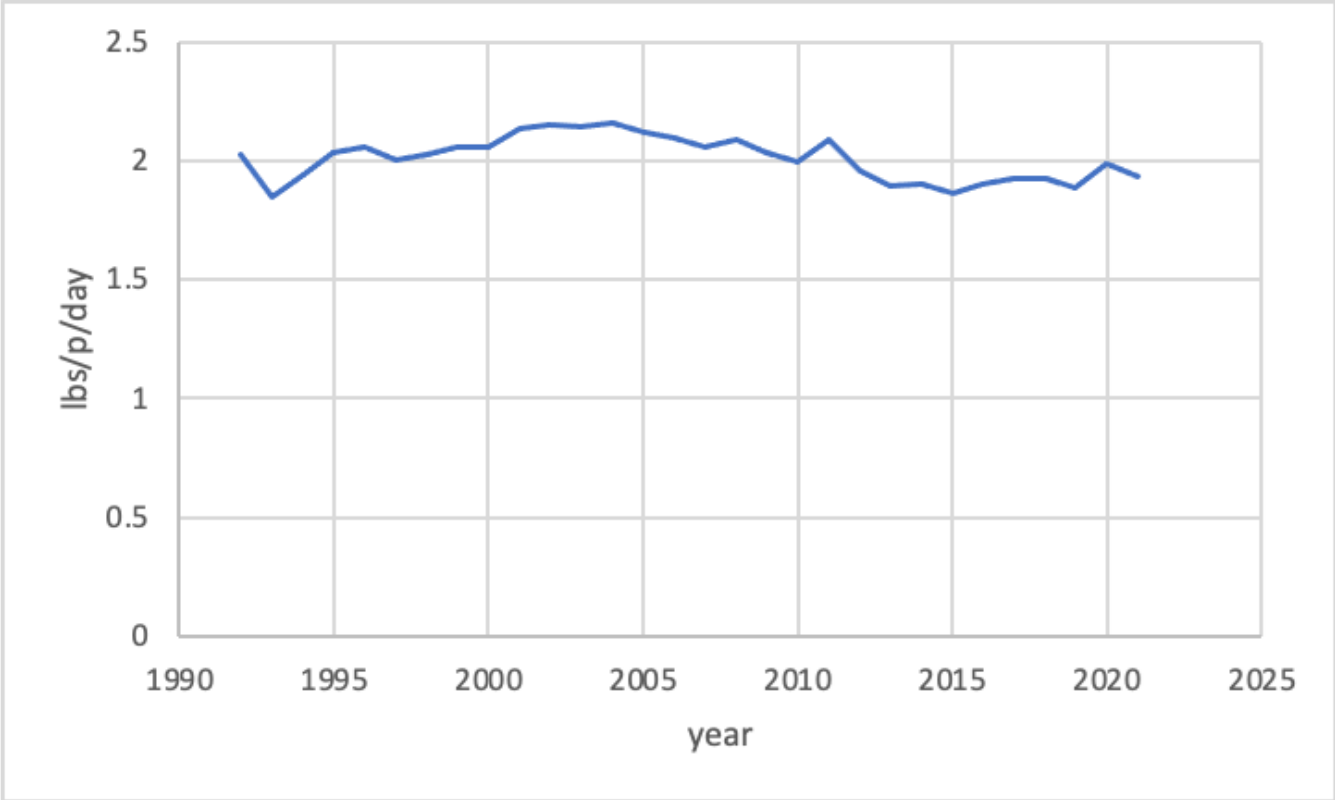
48.9% Hispanic/Latino

10.5% African American/Black

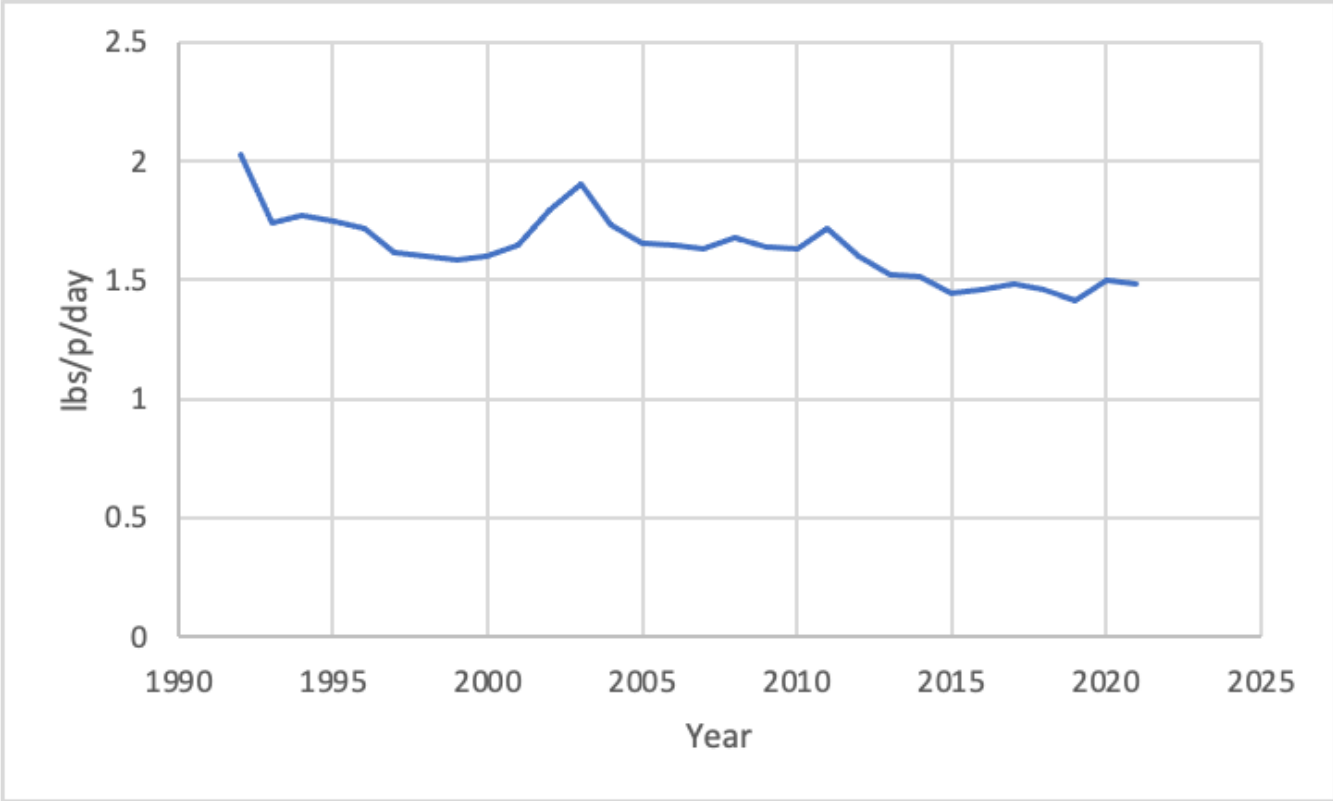
## Percent Distribution of Race/Hispanic Origin Groups



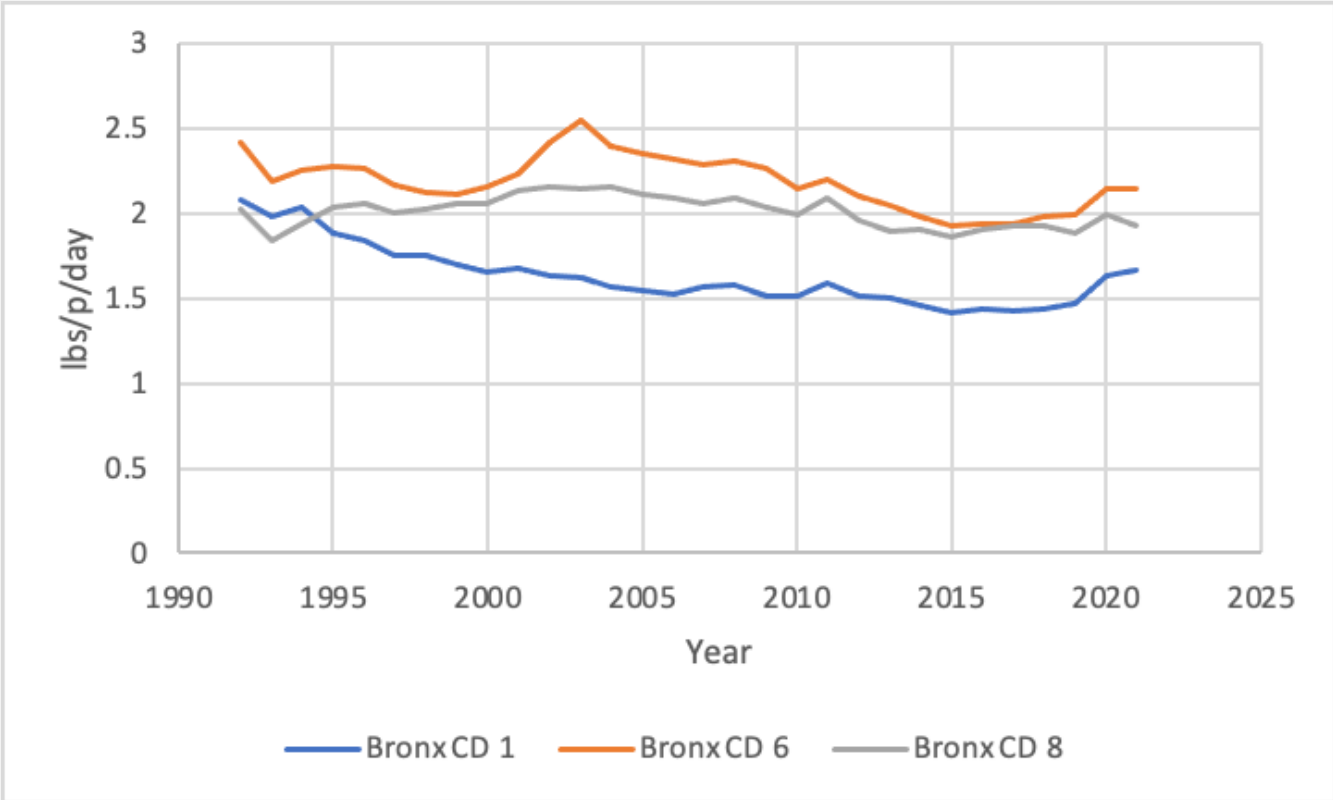
# Bronx 8 Total



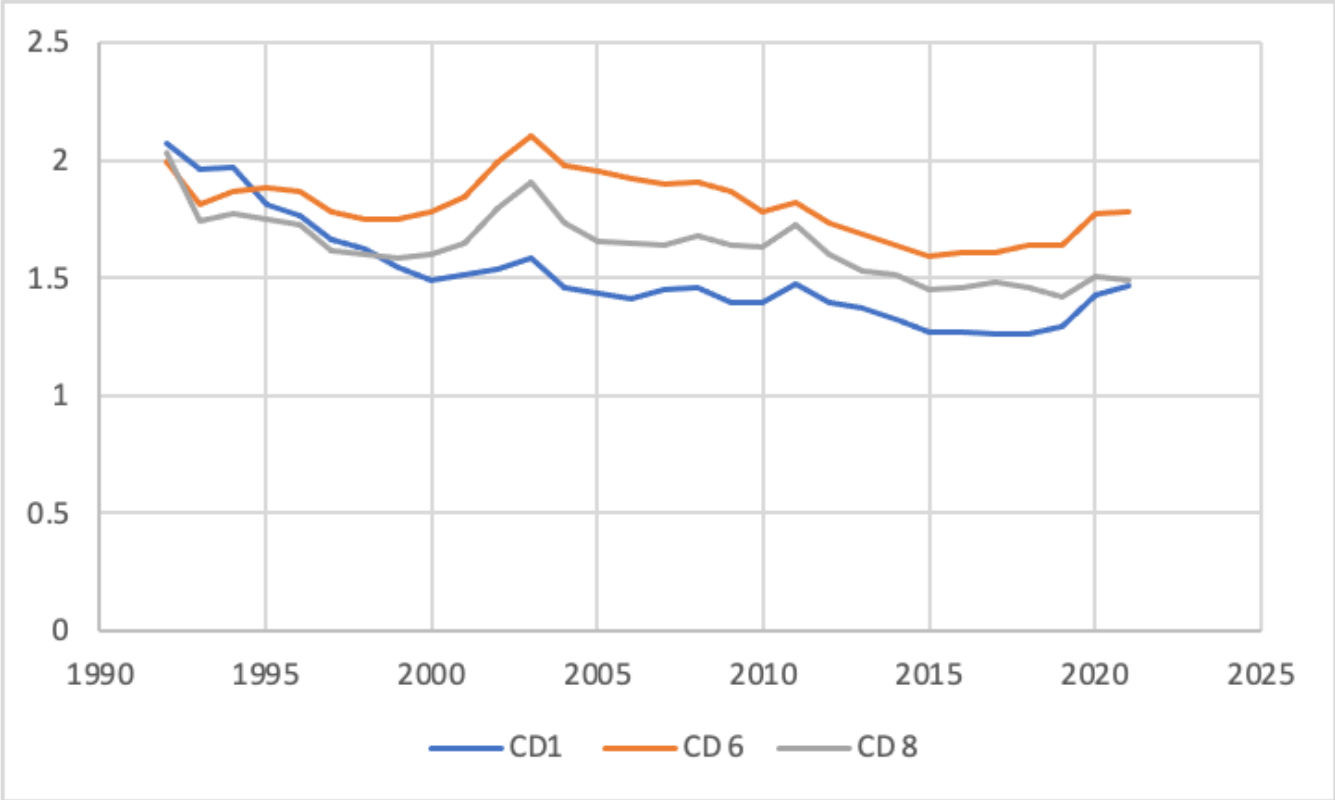
# Bronx 8 Disposed



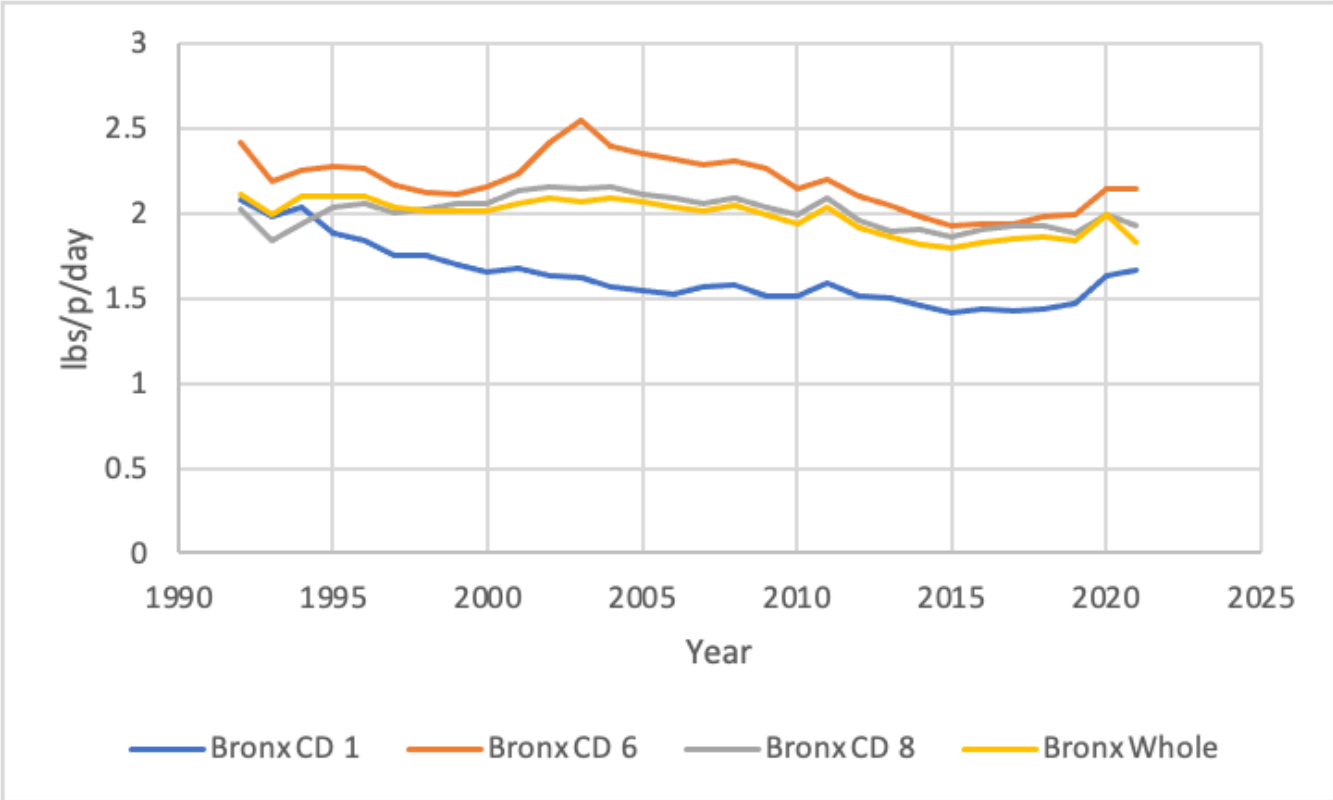
# Comparison Between Bronx CD 1, 6, 8 Total



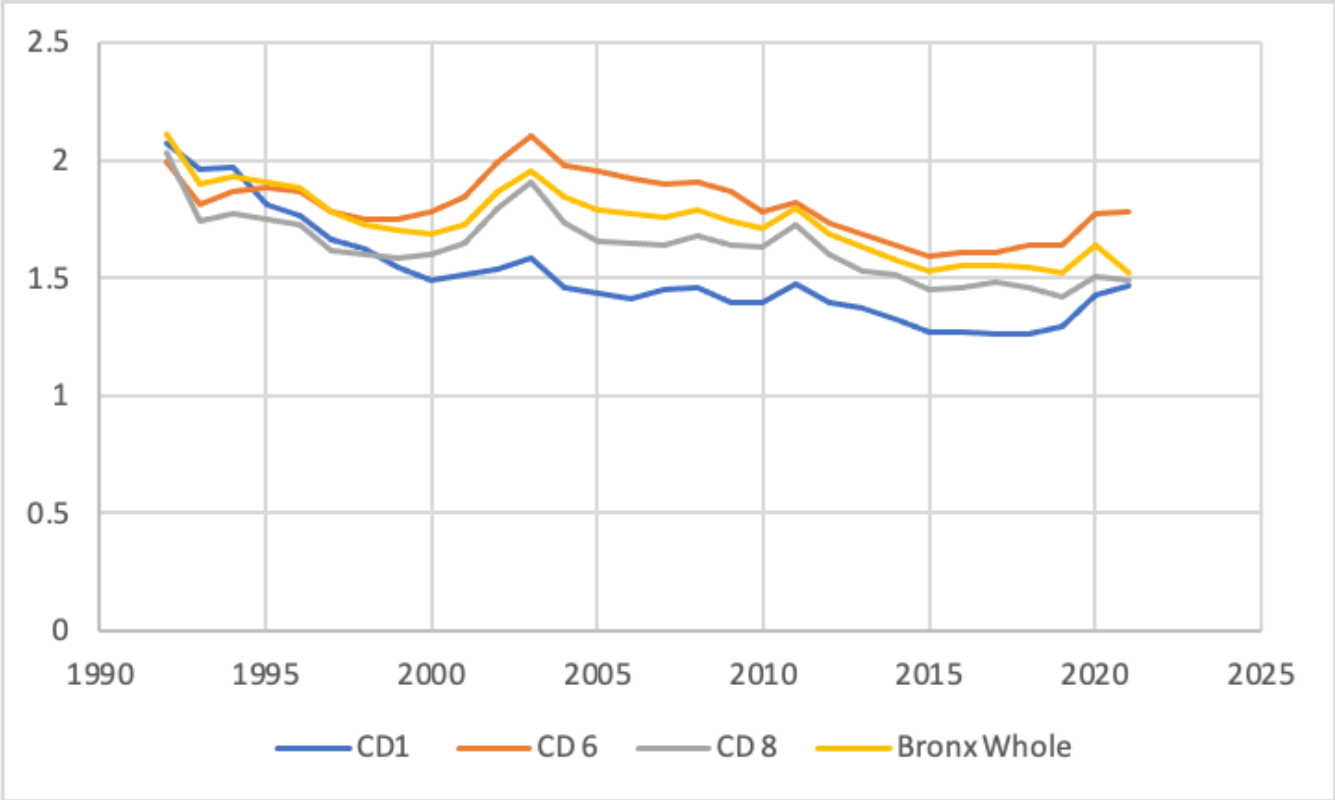
# Comparison Between Bronx CD 1, 6, 8 Disposed



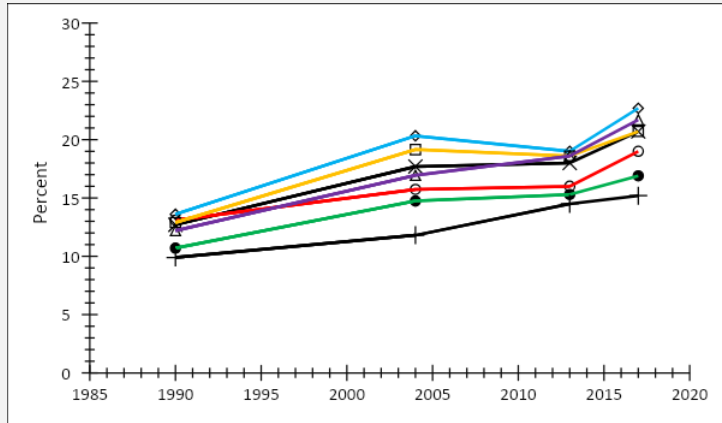
# Community Districts and Bronx Whole Total



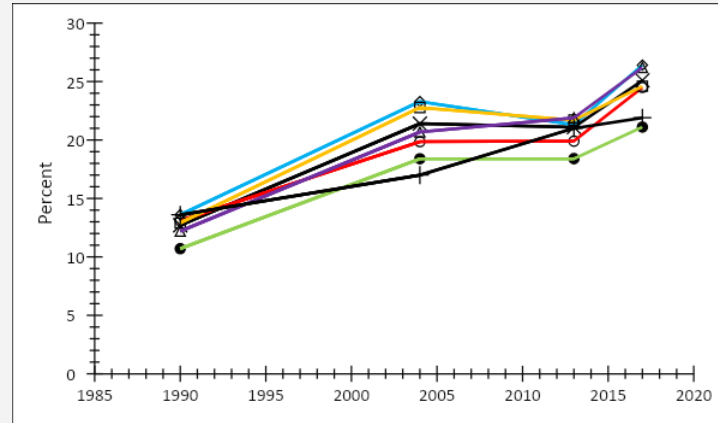
# Community Districts and Bronx Whole Disposed



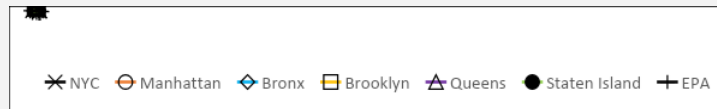
# NYC food waste composition



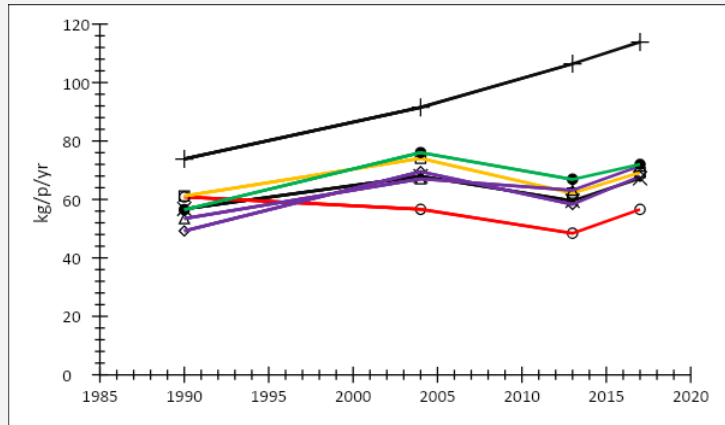
Total waste stream



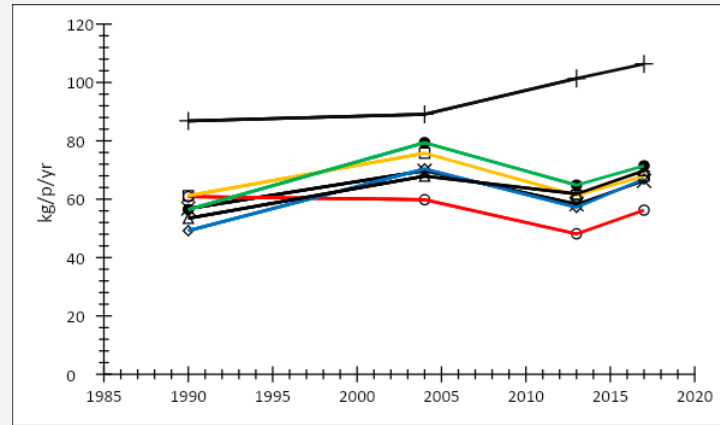
Disposed waste stream



# NYC food waste composition



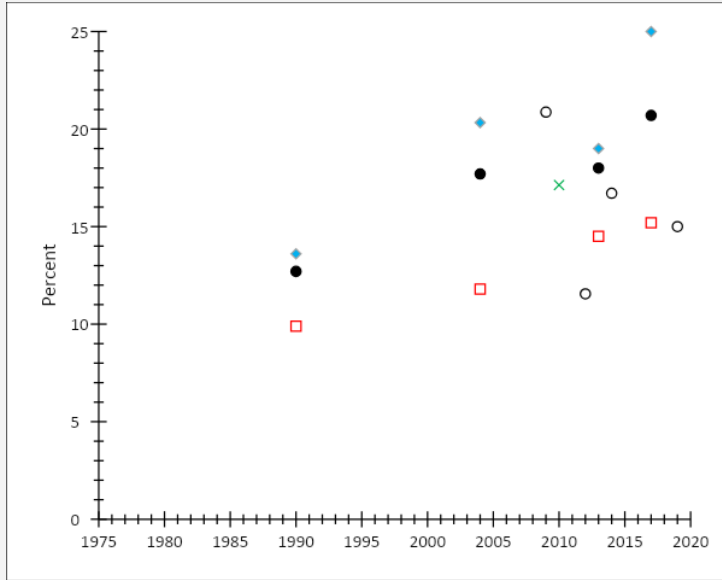
Total waste stream



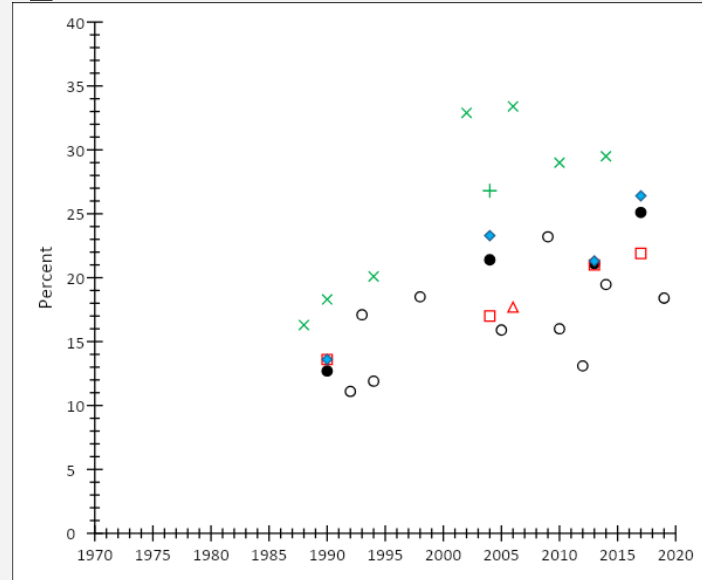
Disposed waste stream

✕ NYC ○ Manhattan ◆ Bronx □ Brooklyn △ Queens ● Staten Island + EPA

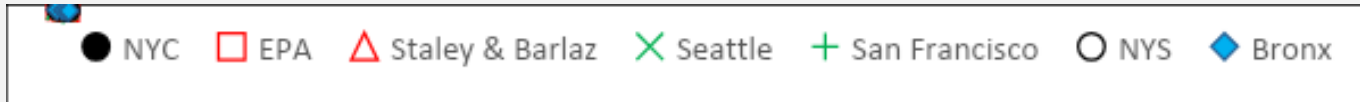
# Comparison sites food waste composition



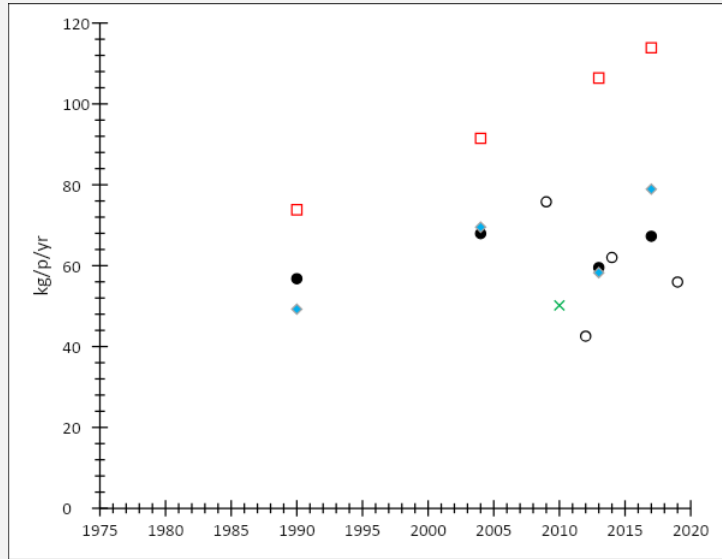
Total waste stream



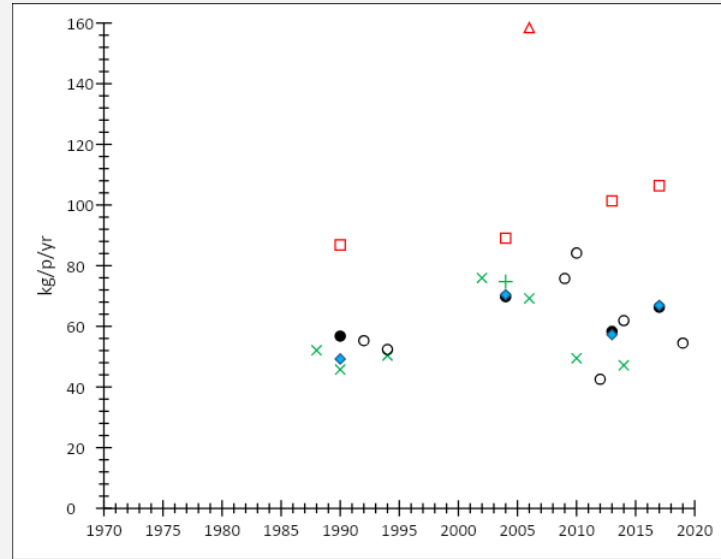
Disposed waste stream



# Comparison sites food waste composition



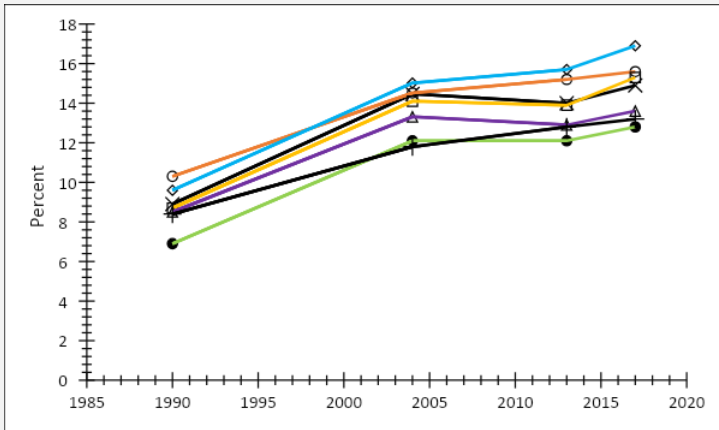
Total waste stream



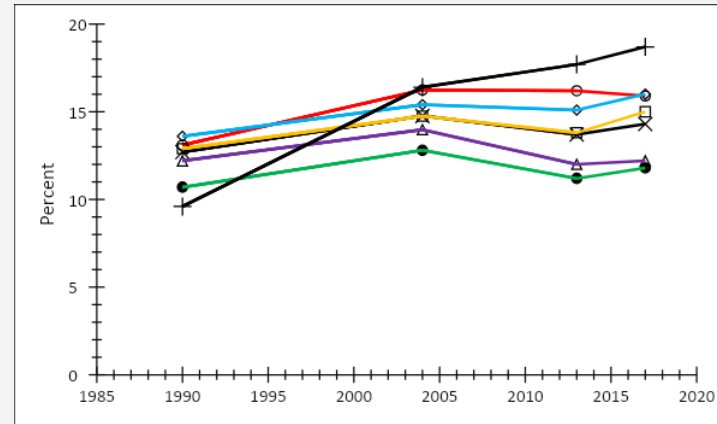
Disposed waste stream



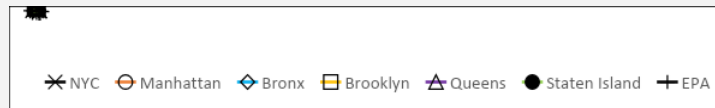
# NYC plastics waste composition



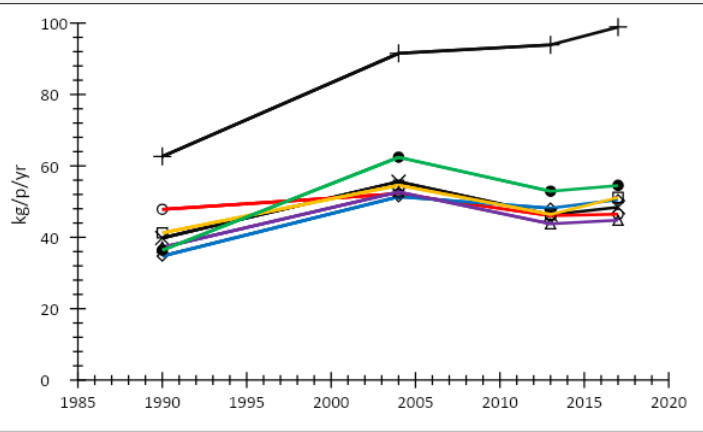
Total waste stream



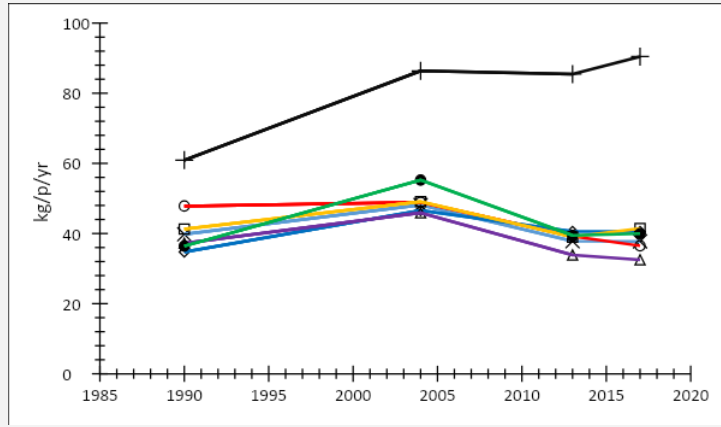
Disposed waste stream



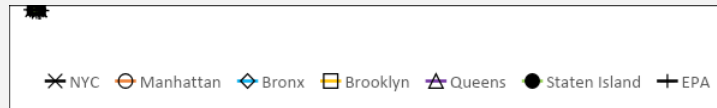
# NYC plastics waste composition



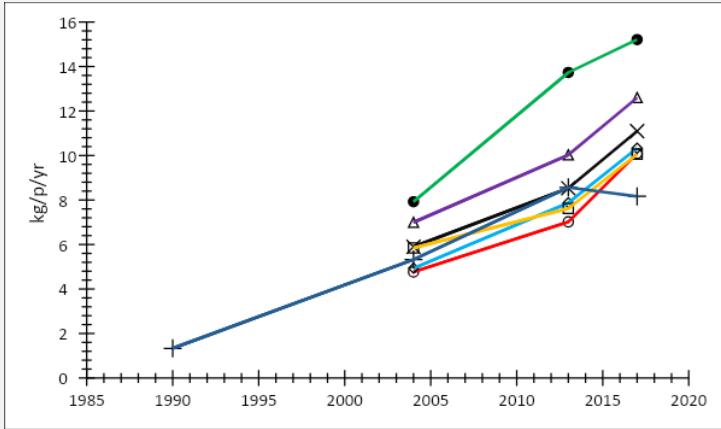
Total waste stream



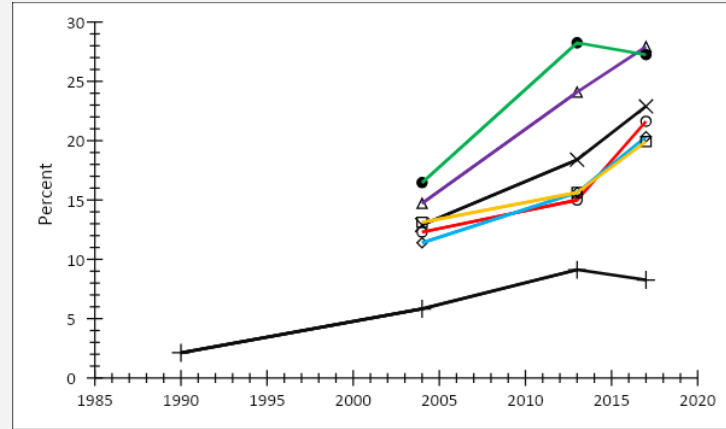
Disposed waste stream



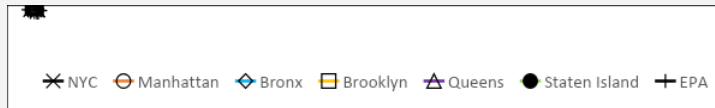
# NYC plastics recycling



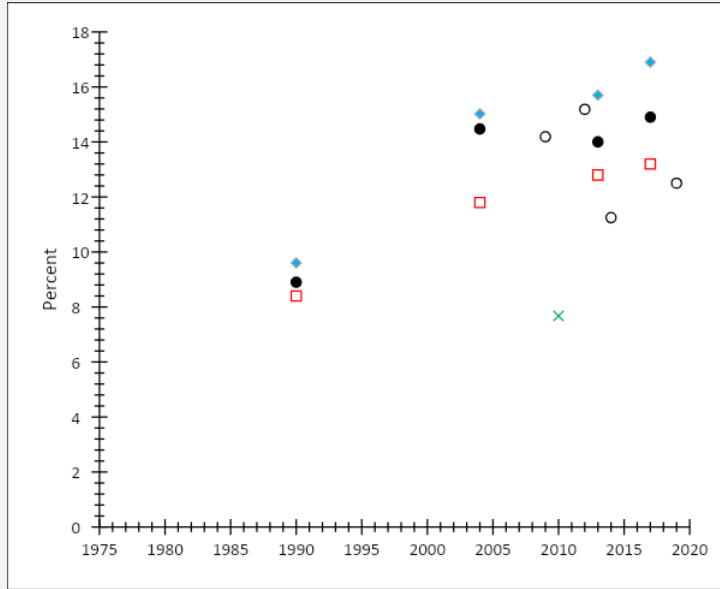
Per capita



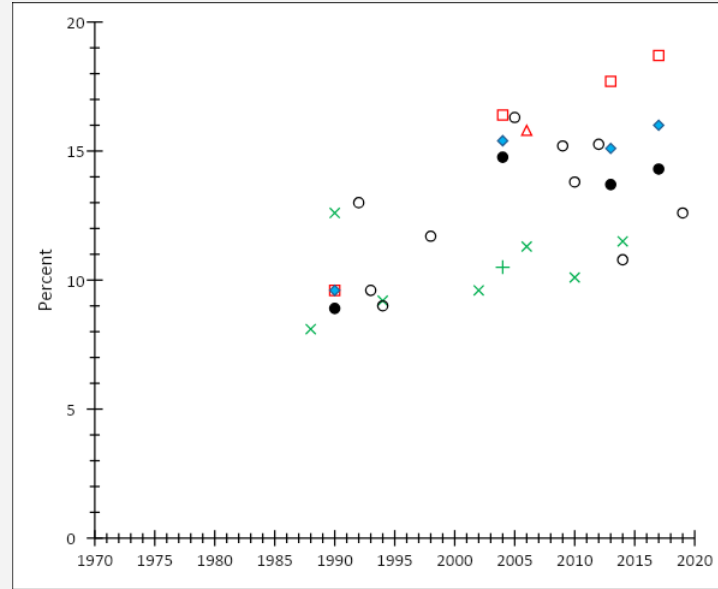
Recovery rate



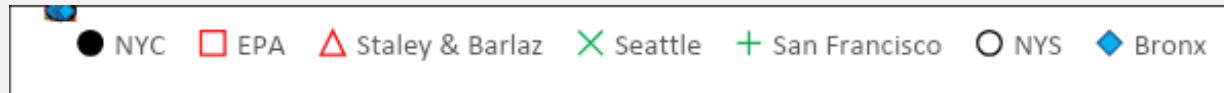
# Comparison sites plastics waste composition



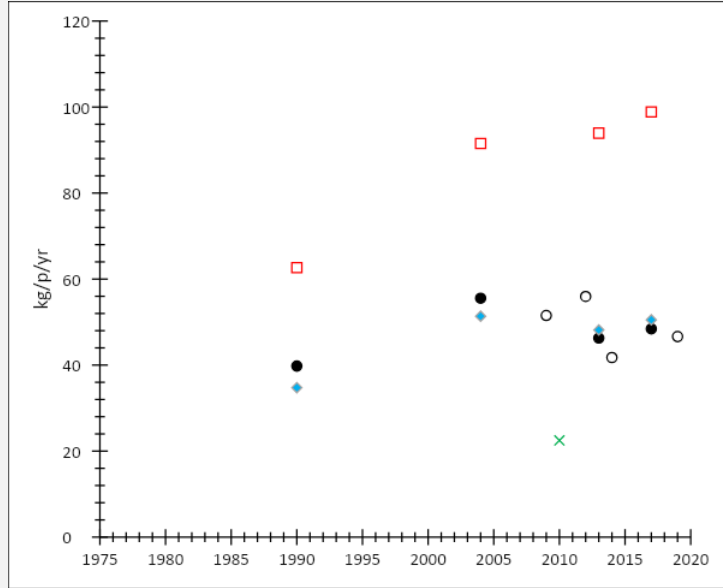
Total waste stream



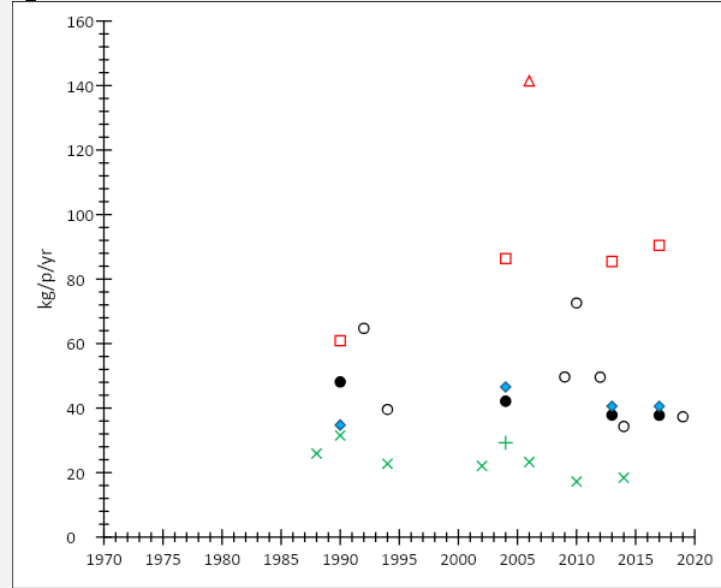
Disposed waste stream



# Comparison sites plastics waste composition



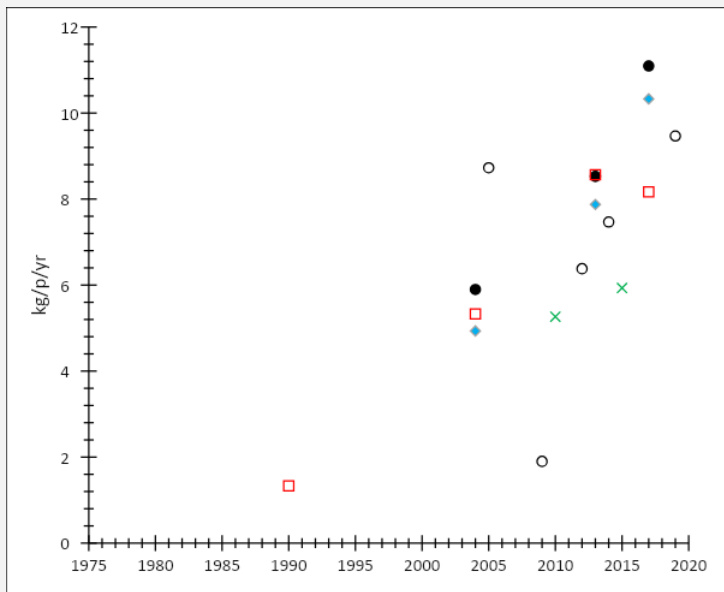
Total waste stream



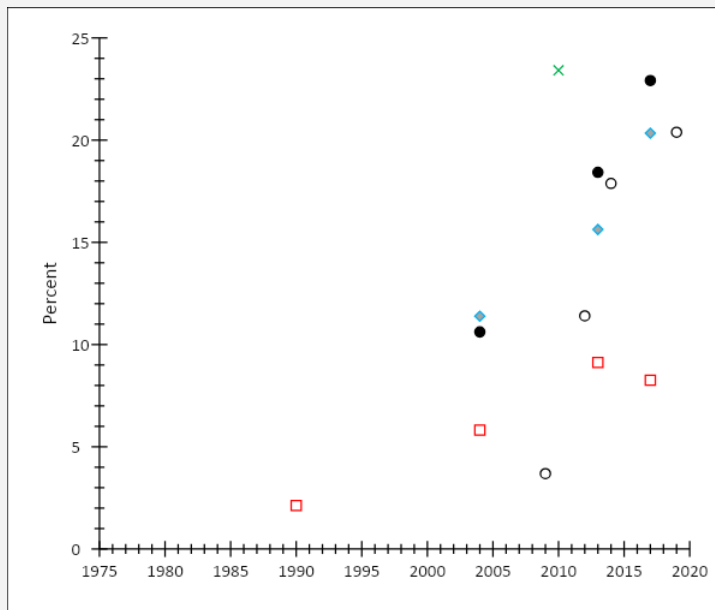
Disposed waste stream



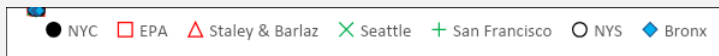
# Comparison sites plastics recycling



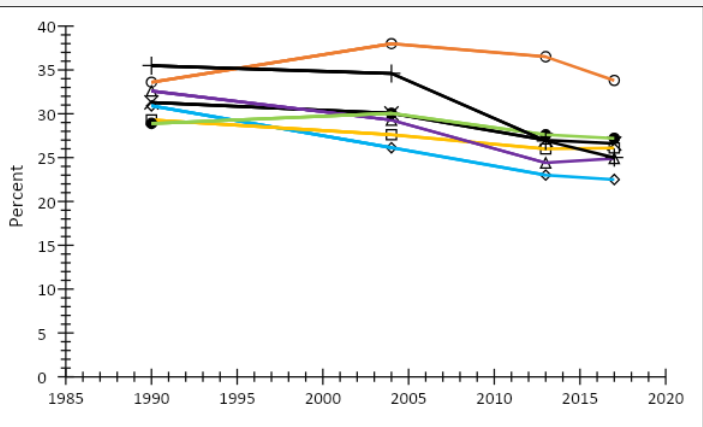
Per capita



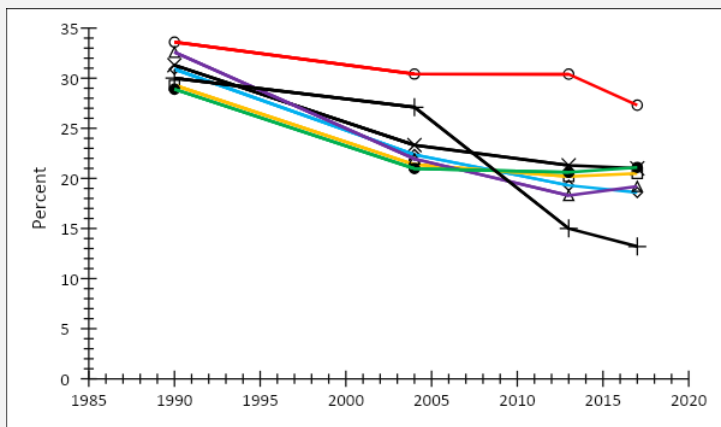
Recovery rate



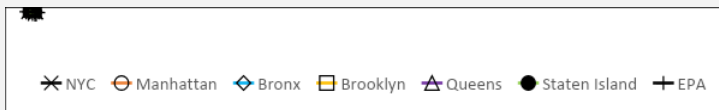
# NYC paper waste composition



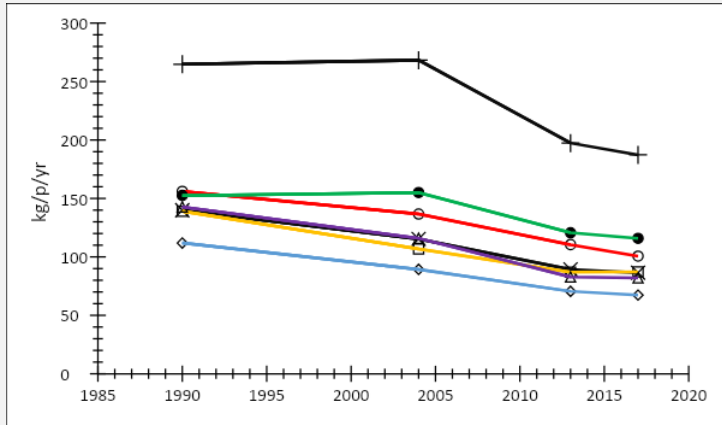
Total waste stream



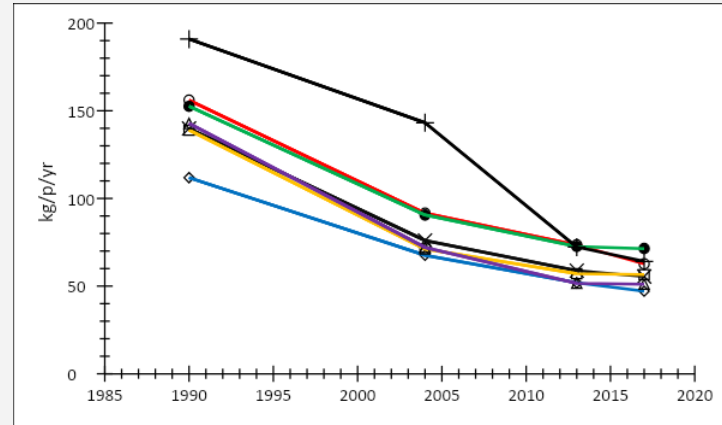
Disposed waste stream



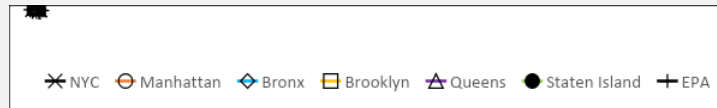
# NYC paper waste composition



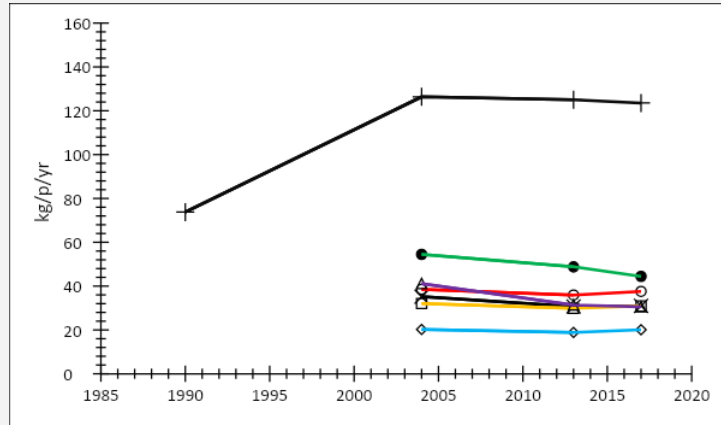
Total waste stream



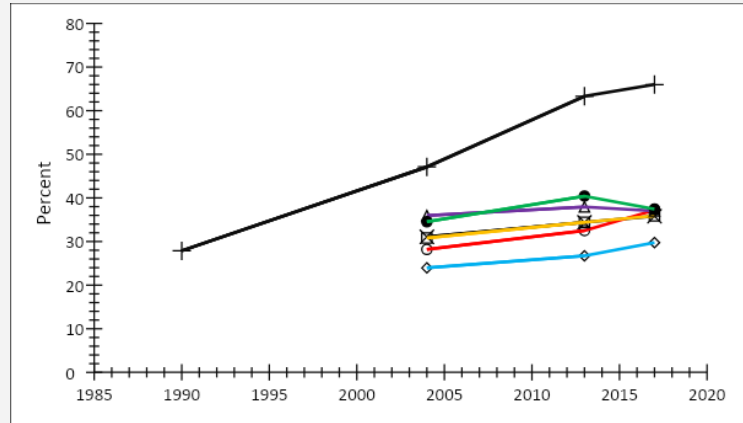
Disposed waste stream



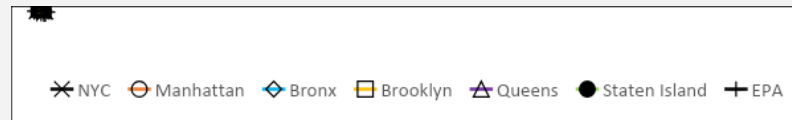
# NYC paper recycling



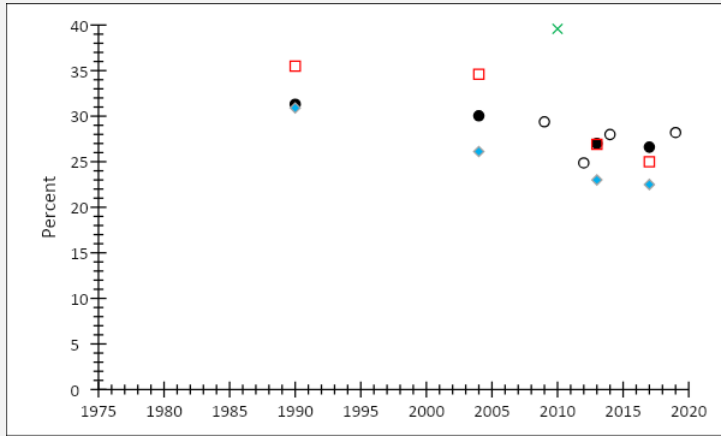
Per capita



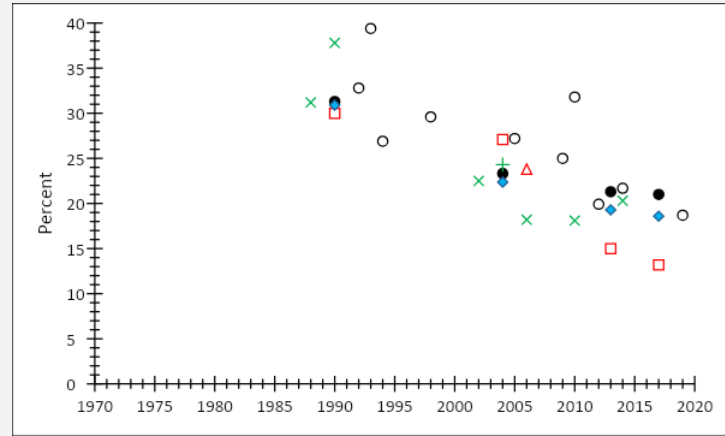
Recovery rate



# Comparison sites paper waste composition



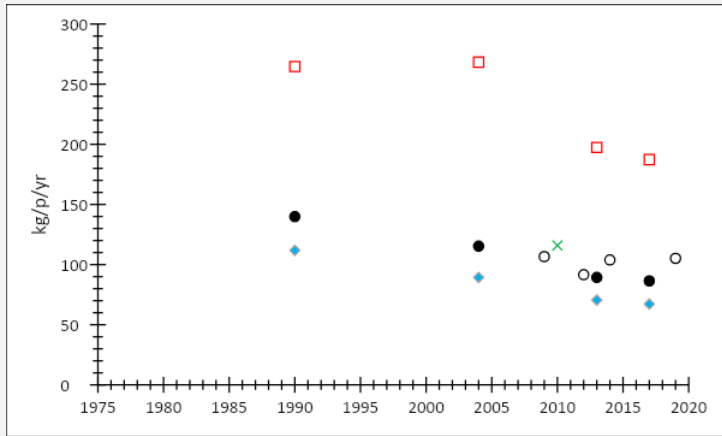
Total waste stream



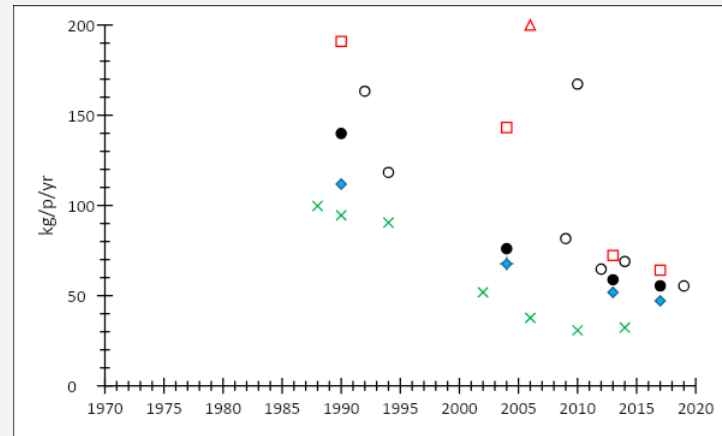
Disposed waste stream



# Comparison sites paper waste composition



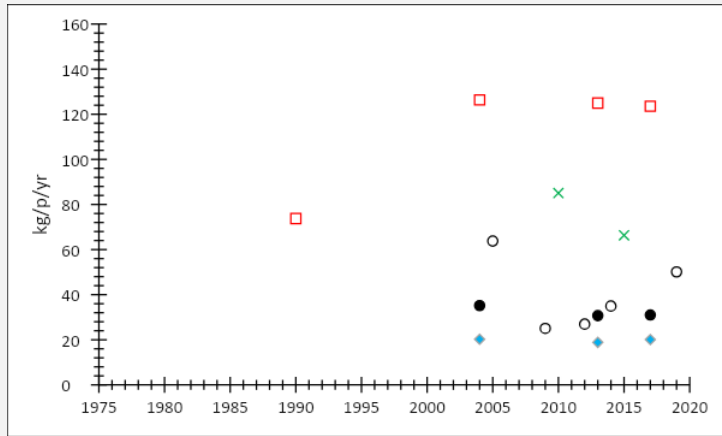
Total waste stream



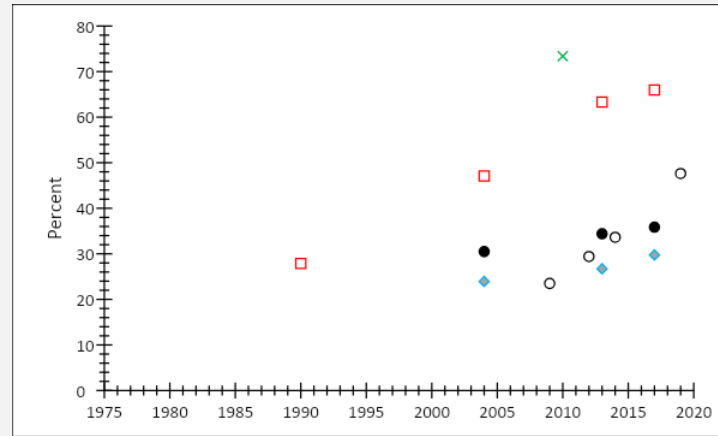
Disposed waste stream



# Comparison sites paper recycling



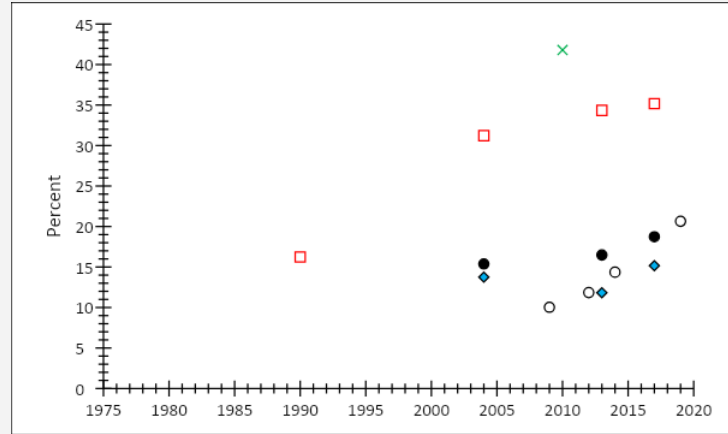
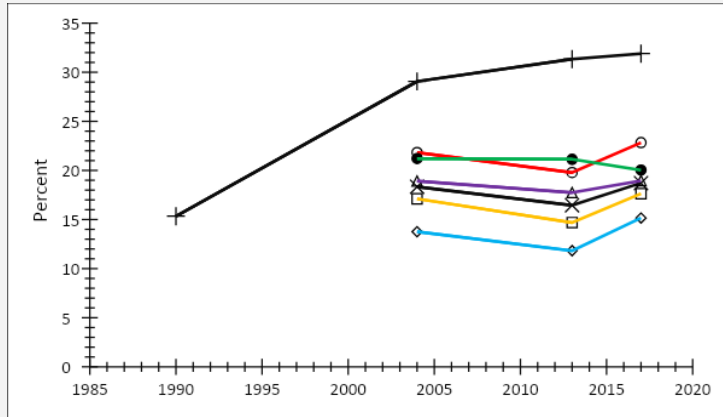
Per capita



Recovery rate



# Overall recycling



# Sources

- <https://www.census.gov/quickfacts/fact/table/bronxcountynewyork/PST045222>
- <https://www.nyc.gov/site/planning/planning-level/nyc-population/american-community-survey.page>
- <https://popfactfinder.planning.nyc.gov/explorer/districts/201?acsTopics=demo-sexAndAge%2Cdemo-mutuallyExclusiveRaceHispanicOrigin%2Cdemo-hispanicSubgroup%2Cdemo-asianSubgroup&censusTopics=populationDensity%2CsexAndAge%2CmutuallyExclusiveRaceHispanicOrigin%2CChoosingOccupancy&compareTo=2&showCharts=true&showReliability=false&source=decennial-current>
- <https://popfactfinder.planning.nyc.gov/explorer/districts/206?acsTopics=demo-sexAndAge%2Cdemo-mutuallyExclusiveRaceHispanicOrigin%2Cdemo-hispanicSubgroup%2Cdemo-asianSubgroup&censusTopics=populationDensity%2CsexAndAge%2CmutuallyExclusiveRaceHispanicOrigin%2CChoosingOccupancy&compareTo=2&showCharts=true&showReliability=false&source=decennial-current>
- <https://popfactfinder.planning.nyc.gov/explorer/districts/208?acsTopics=demo-sexAndAge%2Cdemo-mutuallyExclusiveRaceHispanicOrigin%2Cdemo-hispanicSubgroup%2Cdemo-asianSubgroup&censusTopics=populationDensity%2CsexAndAge%2CmutuallyExclusiveRaceHispanicOrigin%2CChoosingOccupancy&compareTo=0&showCharts=true&showReliability=false&source=decennial-current>